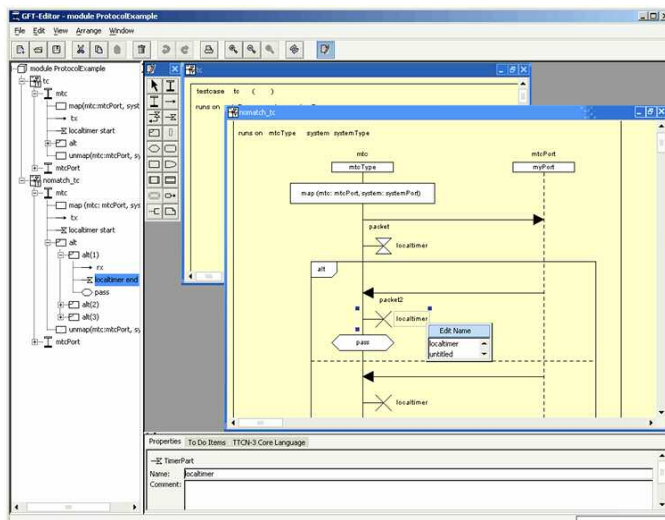
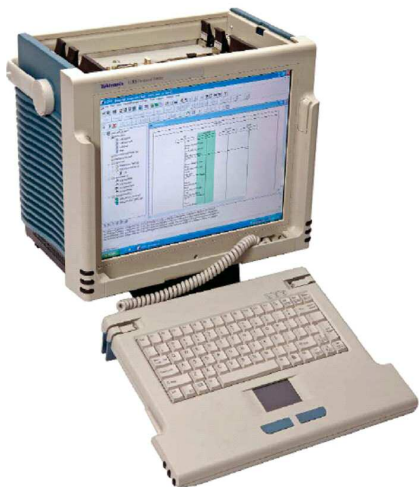


K1297-G35 TTCN-3 Graphical Test Environment

User-friendly Test definition and execution



Graphical Test Case Description

Overview

TTworkbench is the graphical test development and execution environment based on the international standardized testing language TTCN-3. It includes the full range of features needed for test specification, execution and analysis.

Apart from text-based TTCN-3 test specification, TTworkbench also offers the option of graphic definition of test cases. Once tests have been defined in TTCN-3, TTworkbench compiles them in an executable test suite. The comprehensive test management and test execution environment feature allows users to administer, execute and analyze their tests.

TTworkbench supports test automation methods which significantly reduce costs and ensure optimal quality throughout the whole test cycle.

Features & Benefits:

- ▶ Easy and fast test definition in textual and/or graphical format
- ▶ All-in-one development concept reducing time and costs for the whole test development cycle
- ▶ Full supported test automation eliminates manual, high cost testing
- ▶ Technology independent test system design in TTCN-3
- ▶ High reusability and easy execution of predefined tests
- ▶ Reliable test suites through fast and efficient tracking of bugs

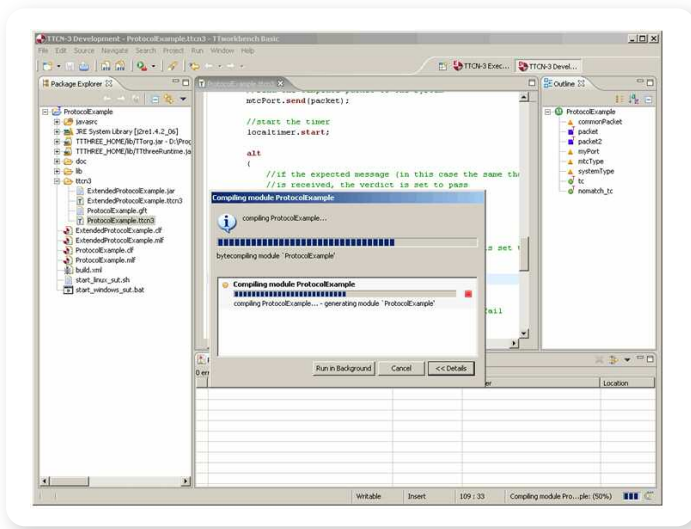
Specifications & Software Applications

Minimum Hardware/Software Requirements

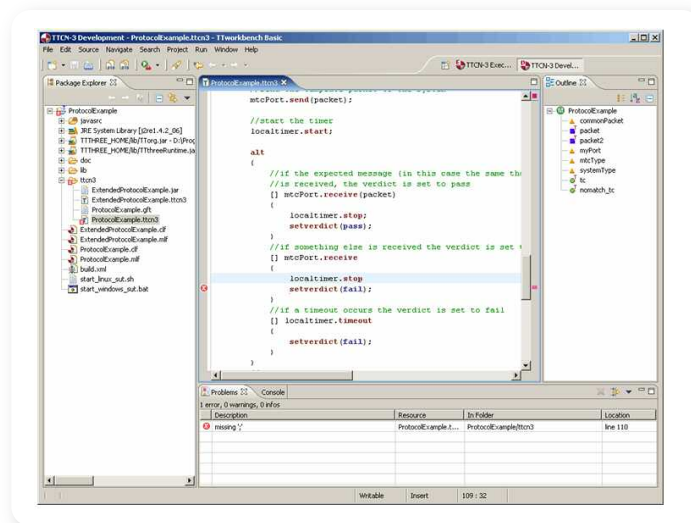
Operating Systems	Windows XP, 2000, 98, ME Linux Red Hat v7.1 (x86/GTK) Linux SuSE v9.1 (x86/GTK)
Memory	512 MB (1 GB recommended)
Java 2 Platform (JRE)	http://java.sun.com or http://www.ibm.com/developerworks/java/jdk/

Product Features & Applications

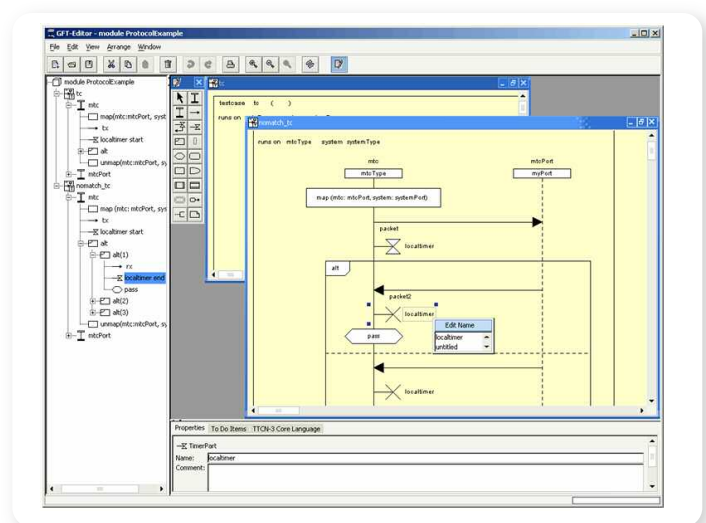
TTworkbench can be deployed for testing products and services in a wide range of different industry sectors. Candidate systems for testing can be both hardware- and software-specific, as testing is based on TTCN-3. This generic test language is the medium to evolve technology-independent test suites.



TTman Manage, Execute and Analyze TTCN-3 Compiled Test Suites



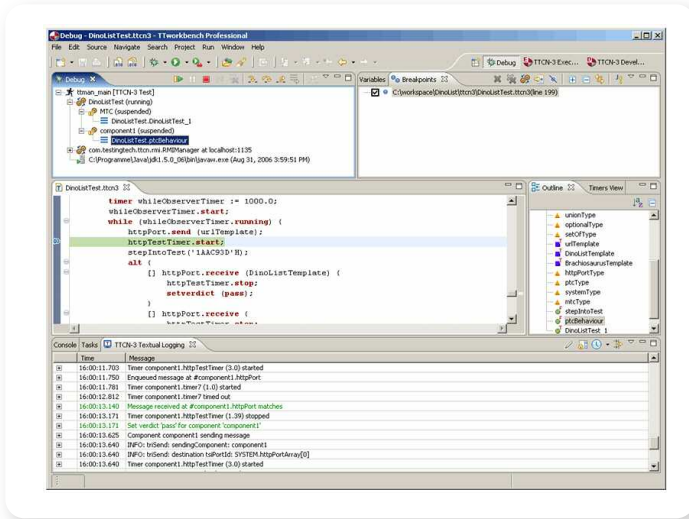
CL Editor User-friendly, text-based test definition



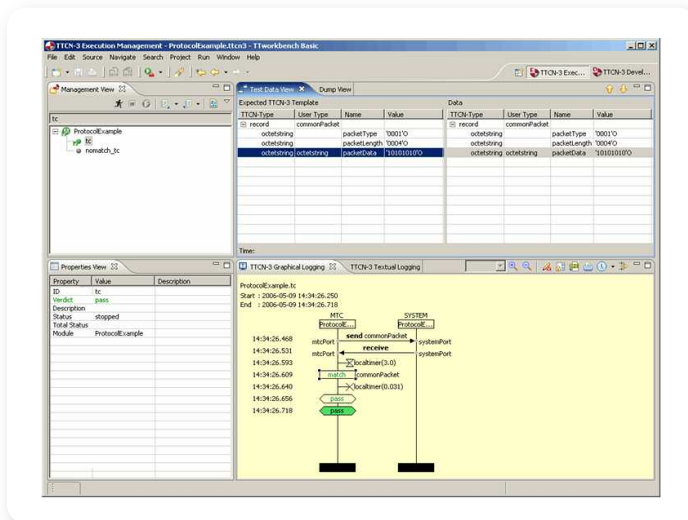
TTthree Compile TTCN-3 modules into test executables

Tektronix' Communications Business Division

Software Applications



TTdebug *Debugging of TTCN-3 Source Code Levels*



GFT Editor *User-Friendly Graphical Test Specification and Documentation*

For Further Information

Tektronix maintains a comprehensive, constantly expanding collection of application notes, technical briefs and other resources to help engineers working on the cutting edge of technology.

Please visit www.tektronix.com

Contact Tektronix:

Please visit www.tektronix.com/communications

Phone:
1-800-833-9200 option 1
+1-469-330-4000

Locate your nearest Tektronix representative
www.tektronix.com/contactus

